

E-FAST SYSTEM FOR HOSPITALITY & TAKEAWAY



E-Tek Solutions
The Complete Solution Provider

Why E-tek Solutions...?

E-tek has experience of over a decade for providing EPoS solutions to the retail food sector as well as general retail, hospitality and fast-food. With excellent performance over the years in software development, communication, training, support and maintenance, e-tek is well positioned to meet the needs of today's business demands. Whether your business is a sole trader or a multiple chain, trading as a convenience store or a fast-food takeaway, a solution to meet your individual requirements within budget is our aim.



Our software products are very comprehensive yet coupled with our company owned dedicated software development facility; teams work compassionately with our customers to provide bespoke software solution to your individual needs.

Over the years we have extensively developed vast range of features now included in our products bringing it in-line with the 21st century demands. Our solutions cover all requirements of the retail systems user, from the point of sale to the back office, communications with wholesalers and head office, performance reporting and business analysis, resulting in increased controls and increased profits. Our retail products are linked to Nisa, Costcutter, Spar and Bookers for automated stock reordering, meanwhile our head office software can allow you to connect to any number of stores to evaluate each individual store performance. Optional features include linking to chip & pin for credit card payment processing as well as Sage for your accounting needs.

Our customers are from very diverse background ranging from independent convenience stores to being part of a branded fascia. Our food retail customers include retailers from Premier, Londis, Spar, Nisa Local and Nisa Today as well as independents like Rai Supermarkets, Noori Foods, Bangla Station, chain of Family Choice and others like these. Meanwhile Our fast food, hospitality and other retail clients include names like Kebabish Original, Chicken Cottage and Dixy Fried to just mention a few. Within our offices in Houghton Regis (UK) we have an in-house call center to support your after-sale calls where a very experienced support team will answer your emergency calls around the clock with a dial in facility to diagnose and rectify any system problems. Our system engineers based around the country will respond within hours to rectify any problems at the client site. Our customer base growth pattern is the testimony to our successful business model.



Woody's Express

"Since installing E-tek's EPOS systems I've been able to devote my time to opening other 3 shops within the London area. I must thank E-tek for their contribution, without their expertise I would have never had managed it all"

Easy To Use E-Fast Point of Sale System

Running a busy Restaurant or Fast Food Take Away couldn't be any easier with E-Tek ground breaking hospitality software system. E-Fast point of sale system is the perfect partner for Fast Food Take Aways and restaurants operators and can enhance both your business and your customers dining experience. All food orders can be automated via E-Fast hand held terminal or at the till, relayed to your chef on a kitchen screen or kitchen printer, giving him vital information such as table number, covers, and server's name, time of order and full details of the item requested.

E-Fast EPoS offers a restaurant manager many benefits including the ability to monitor employee time keeping, stock control for wet and dry products with real time reporting, security controls, menu changing options, more accurate billing and multiple payment options at the point of sale, such as bill splitting.

The optional Delivery Module in the software also allows instant call recognition for Take Away customers, schedules and allocate deliveries and manages drivers' petty cash account.



Touch Screen POS



Handheld Computer



Cash Drawer



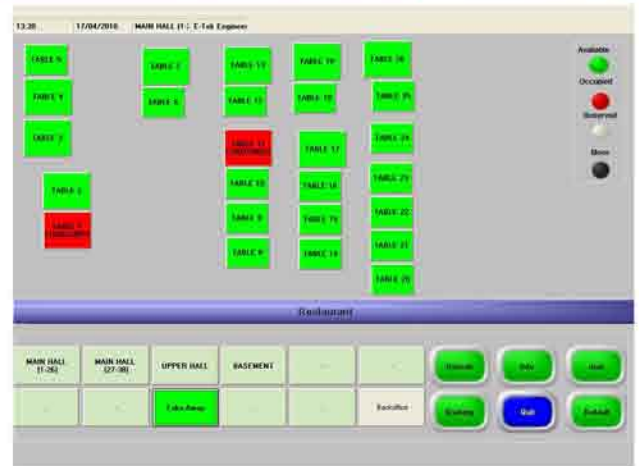
Thermal Printer

E-Fast For Take Aways & Restaurants



E-Fast software features include

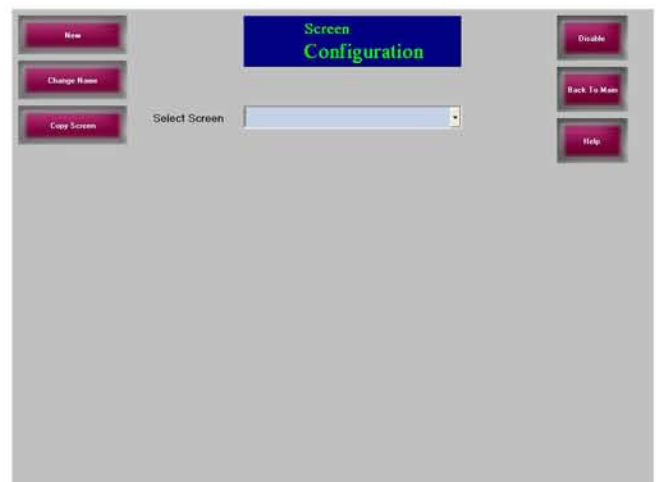
- Simple & fast screen layouts
- Multiple payment options
- Innovative table management & table plan
- Easy product maintenance
- Numerous user security features
- Delivery module
- Fully integrated customer CRM system
- Real time promotions, meal deals, set menus
- Integrated customer loyalty solution
- Easy bill splitting
- Multiple Payment Methods
- Table audit entries
- Daily, Weekly, Monthly, Yearly Reports
- Year on Year product comparisons
- Sales mix by category, department, time
- Aggregated time period reports
- Weekly financial statements
- Popularity reports
- Historic X/Z reads
- Full audit trail by staff/key function
- Transaction logs
- Item profitability / GP reports
- Cost of sales report
- Wastage reporting
- Stock usage



Back Office Software

E-fastBack Office software features include the following

- simple & fast screen layouts
- Numerous user security levels
- Easy product maintenance
- Multiple price levels
- Recipe set-up
- Supplier setup
- Creating and linking screens
- Stock control
- Stock valuation reports
- Operator reports
- Void/discount/refund reports
- Sales analysis reports – daily/weekly/monthly
- Products reports
- Historical sales receipt printing
- Customer setup
- Delivery driver setup – for delivery module only
- Discount/refund reason setup
- Multi buys or promotion setup
- Kitchen printer setup
- Kitchen screen setup
- Comprehensive reporting on stock, operator or sales



EPOS Peripherals

J2 580

The 580 from J2 sets the new benchmark for integrated touchscreen systems by delivering a highly reliable, flexible, low cost solution without sacrificing performance.

The 580 is the ultimate in price performance, leading edge technology for the point-of-sale, and point-of-information device markets.



ODYSSE BY AURES

Odysse is the first exclusive POSLIGNE® collection of integrated point-of-sale terminals with distinctively styled, colourful and contemporary lines. The unique "Clip'n Color" concept uses interchangeable polycarbonate colour clips located on the unit's sides, touchscreen surround and integrated customer display



EPSON TM-T88IV

Designed specifically for high-volume sales environments, the thermal TM-T88IV offers 25% faster printing than its predecessor, a redesigned case, two-colour capability and new easy-to-use features. With its 200mm capability and new easy-to-use features. With its 200mm per second print speed, enhanced graphic capability and increased user memory, the TM-T88IV delivers ultra-fast results. Unlike other printers, it prints text, barcodes and graphics at the same fast speed



CHIP & PIN



- Real-time authorisation
- Links to any merchant bank
- Integrates with the EPOS solution

EPSON TMU-230



Dirt resistant kitchen printer
Designed for the demanding hospitality environment, this kitchen printer features a water resistant, easy-to-clean case with anti-bacterial coating. Its wide range of interface options - standard, parallel, serial, Ethernet and USB - enable it to fit into any restaurant network or order entry system.

MOTOROLA PDA



Superior data capture capability and wireless communications are combined in this ruggedized handheld computer. This small and lightweight device with Microsoft Windows Mobile 2003 software for Pocket PCs designed for mobile workers and managers is suitable for use in a number of environments including retail.

KITCHEN MONITOR



- Easy visual identification of items
- Highlighted key item summaries
- Split screen view for large orders

The Fedelta Kitchen Monitor is designed for Quick Service environments and is specifically targeted at increasing efficiency and accuracy by delivering orders to visual displays. The system can be configured to send selected items to designated preparation areas allowing staff to focus on items of interest while still retaining an overall view of the order.

CASH DRAWERS



The 3S-430 Cash Drawer is a very popular low-cost unit made from a sheet-steel frame at an affordable price. Available in BLACK. WHITE available on request. The 4 main note compartments each have a hinged flap beneath which other notes or surplus notes can be stored.

...helping you secure your business

CCTV Cameras

BODY CCTV CAMERAS

Traditional CCTV Cameras to capture high quality images on your security system. Ideal for any installation. ezCCTV.com can supply cameras to meet the highest quality with day/night switching or for installations where cost is a factor, our entry range cameras will suit your requirements perfectly.



DOME CCTV CAMERAS

Dome CCTV Cameras to capture high quality images on your security system. Ideal for any installation. We can supply dome cameras to meet the highest quality, pan & zoom dome cameras, with day/night switching or for installations where cost is a factor, our entry range cameras will suit your requirements perfectly.



INFRA RED CCTV

We have a superb range of Infra Red Camera solutions. These IR cameras will provide excellent picture quality during both the day and night time. Even in pitch-black darkness, our CCTV Infra Cameras can provide excellent picture quality. These Infra Red CCTV Cameras will help you capture images in all types of CCTV monitoring environment.



GEOVISION



GeoVision's GV-Series is a PC based surveillance system designed to process video, audio and data from local and remote network surveillance environment. With more special features and more integration versatility provided, the GV-Series Surveillance System V8.3 delivers more powerful and streamlined surveillance operation performance as well as enhanced management efficiency.

SAMSUNG SDC - 425

The Samsung SDC-425 is the next generation of Samsung Techwin's popular SDC-415. Based upon the 4th generation of digital signal processing technology, the SDC-425 has the industry's highest resolution specification for a standard definition format camera. In addition to superior resolution, the W-IV DSP provides for a rich set of advanced features and performance specifications.



WIRELESS CAMERAS

Wireless cameras are extremely convenient, because you do not have to lay any cables. However, the use is limited because legal restrictions on transmitter power mean that unless the camera and receiver are really close then the picture will be subject to interference a few times a day, or more in certain environmental or commercial locations.



In today's competitive environment, security is a must in order to maintain control of your business. At E-Tek Solutions, we specialize in providing a comprehensive range of digital surveillance systems to suit any business or personal needs. With systems ranging from a 4 camera DVR based system to an unlimited number of PC based solutions, E-Tek Possess the complete knowledge and capability to secure your business.

Reasons To Use E-Tek

- Systems tailored to your specific needs
- Superb customer service
- Quality product ranges
- Leasing packages
- Wide range of products
- CCTV remote viewing via internet
- 24 hour call out
- Rapid response times
- High quality solutions
- Value for money

e

"The one-stop shop for all your convenience retailing technology needs."

E-Tek Solution Ltd . E-Tek House . 22 Queen Street . Houghton Regis . LU5 5BT

t: 01582 845 990 f: 01582 864 121 e: info@e-tekLtd.com

www.e-tekLtd.com



E-Tek Solutions

The Complete Solution Provider